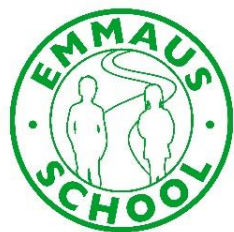


PROSPECTUS ACADEMIC YEAR 2017/18



# EMMAUS SCHOOL



## TABLE OF CONTENTS

Headteacher's Welcome	Page 2
History of Emmaus School	Page 3
School Premises	Page 3
Philosophy of Emmaus School	Page 4
Belief Statement	Page 4
Christian Education	Page 5
Creation and the Theory of Evolution	Page 5
Aims of Emmaus School	Page 5
The Curriculum	Page 6
The School Day	Page 6
School Rules	Page 6
Class Groupings	Page 7
Reception to Year 6	Page 7
Years 7 to 11	Page 8
Personal, Social and Economic Education (PSHEE)	Page 9
Extra Curricular Activities	Page 9
Admissions	Page 10
Application Procedure	Page 10
Inspection Report	Page 11
Contact Information	Page 11

## HEADTEACHER'S WELCOME

When visitors first enter our school, they invariably comment on the atmosphere. Described in infinitely different ways, the essence of a visitor's immediate impression is happy, motivated pupils working purposefully, quietly and independently in a calm learning environment of small classes, which are skilfully managed by dedicated, caring teachers who are passionate about their job.

The pupils themselves describe it as a loving family, where everyone is known and valued - a safe haven, where children can be themselves and find acceptance. Pupils thrive here; spiritually, socially, emotionally and academically.

'What is our secret?' is a question I often ask myself. In a fast-paced, constantly changing world of education, I believe that our success is because everything we do is underpinned by timeless and enduring values - attentiveness, faithfulness, creativity, diligence, patience, contentment, obedience, wisdom, tender-heartedness, thankfulness, honesty, joyfulness, love, forgiveness, responsibility and self-control. Values which are rooted in the Christian faith.

If you have never visited this very special place, I would love to welcome you and show you round so that you can see Emmaus for yourself.

Miriam Wiltshire B.Ed (Hons)  
Headteacher



## HISTORY OF EMMAUS SCHOOL

Emmaus School opened in September, 1997, with three full-time pupils and two members of staff. Since that time there has been a steady growth in the number of children to around seventy pupils which has enabled us to build firm educational, pastoral and disciplinary foundations.

Emmaus School welcomes applications from pupils of varying abilities and from all backgrounds. Pupils start at Emmaus School from the age of five years old and continue through secondary education until the age of 16.

## SCHOOL PREMISES

The school building, which was originally built in 1880 as a National School, has been modernised and an extension was added in 2008 to provide a further classroom. The School has a fully equipped science lab and a hard surface playground. Pupils use the large playing fields and tennis court nearby for PE, and make regular use of the climbing and outdoor play equipment next to the School.

The newly developed garden area gives pupils the opportunity to sit and chat to one another, as well as tending the vegetable patch and cooking over the fire pit. Younger pupils also enjoy the sand and water play facilities.

The canal is within easy walking distance and is the scene of many a nature walk, as are the nearby public footpaths in the countryside.

Over the past couple of years, we have begun work on developing the premises further to accommodate our growing class sizes and to enable the School to further enrich each child's educational experience and comfort. A local architect has created an innovative design that will enable us to double the existing space, providing the School with a dedicated ICT suite, kitchen, library and further classrooms. Planning permission has been granted for this stylish extension and a fundraising programme is in place to help the School raise sufficient finance for the project.



## PHILOSOPHY OF EMMAUS SCHOOL

Emmaus School starts with the understanding that we are all made in the image of God, which gives human life dignity and value. The teachers strive to establish an atmosphere of mutual respect recognising that, although adults and children alike are imperfect, a perfect example has been given for us to follow in the life of the Lord Jesus Christ.

We believe that the best place to raise children is in families and that parents have the primary responsibility to bring up their children. By creating a family atmosphere in small classes, the School is an extension of the home and exists to support parents in passing on Godly and moral values to their children. Since the School began, this environment, with its lack of negative peer pressure, has produced confident, independent and hardworking young people who have demonstrated in schools, colleges, universities or employment that they are well-equipped for life in modern British society.

## BELIEF STATEMENT

We believe that:

- There is one God who exists in the three persons of the Father, the Son and the Holy Spirit.
- Everything in and beyond this world was created by God and did not arise by chance or through evolution.
- Everyone falls short of God's standards and deserves to be punished for this sin.
- Jesus Christ alone can take away our guilt and make us right with God. This is because He came into this world as a man to take the place of sinners. For them He lived a perfect life and for them He paid, on the cross, the penalty for their sin. All who commit themselves to Him as Lord are freed from sin's guilt, and each one becomes a new creation.
- Jesus Christ, having died, rose again, leaving behind an empty tomb, and went to heaven from where He controls human history.
- The Bible is, throughout, the Word of God. It is, therefore, to be believed as true, and obeyed in all areas of life and conduct.
- It is only the Holy Spirit who can make God real to us, can convince us of our need of Him and can bring us to repentance for our sin, faith in Him and total commitment of ourselves to Him as Lord.
- The Holy Spirit lives in every Christian and continually prompts him to love, total obedience, good works and a Christ-like lifestyle.
- Jesus Christ will return personally to this world, raise all people to judgment and establish a new heaven and a new earth, which will be the eternal home of all believers.

## CHRISTIAN EDUCATION

A Christian education is concerned with a child's relationship to God, other people and the world in which we live. It is the best possible preparation for the real world and gives the child the opportunity to develop a sense of identity, value and purpose. It is not just about teaching Christianity in the abstract or singing hymns in assembly. All subjects are taught from a Biblical perspective and the whole of school life is affected by the influence of Christ's teaching.

By learning to compare the Christian world view with other world views, most pupils become increasingly able to articulate what they believe. In contrast to riding the emotional rollercoaster that many youngsters experience as they battle to find their identity amongst the pulls and pushes of peer group pressure, pupils who have experienced a genuinely Christian education have proved to be able to live their lives with a steadfast confidence and security in their personal beliefs.

## CREATION AND THE THEORY OF EVOLUTION

Creation and Evolution are taught as faith positions which cannot be proven scientifically. In order to fulfil the School's aim to, 'Produce people who are independent thinkers,' pupils are encouraged to thoughtfully and respectfully examine the different interpretations of scientific observations, such as the fossil record. Pupils are introduced to the work of eminent scientists and their cogent arguments for creation, as recounted in Genesis, as a valid, alternative explanation of the origin of the universe.

## AIMS OF EMMAUS SCHOOL

The purpose of Emmaus School is to educate children to a high standard, in preparation for contemporary society, in a supportive and happy family-orientated environment which caters for the needs of the individual. Emmaus School aims to:

- Help children develop their relationship with God, other people and the world that God has created.
- Prepare children to live in contemporary society and develop Biblical character: attentiveness, faithfulness, creativity, diligence, patience, contentment, obedience, wisdom, tender-heartedness, thankfulness, honesty, joyfulness, love, forgiveness, responsibility and self-control.
- Enable children to develop an appreciation of culture and ideas.
- Develop the God-given talents and abilities of each pupil.
- Produce people who are independent thinkers and view education as a lifelong process.

## THE CURRICULUM

The Bible is central to all that is taught at Emmaus School, not in a false, forced way, but in a natural, God-centred way, so that the children learn that it was God who both created and sustains this universe and makes life meaningful.

## THE SCHOOL DAY

Emmaus School starts each day at 8:45am and pupils are admitted to the building from 8:35am. After registration, pupils join together for daily worship which includes Bible teaching and singing. At morning break, the children have a snack, followed by a packed lunch at midday. The pupils are encouraged to eat healthily. Break times vary in frequency and length according to the age of the children. The school day ends at 3:00pm.



## SCHOOL RULES

Jesus said that all rules are summed up in these two commandments –

“‘You shall love the Lord your God with all your heart, with all your soul, with all your strength, and with all your mind,’ and, ‘your neighbour as yourself.’” (Luke 10:27)

These two great commandments, therefore, will be used as the standard by which the behaviour of the School community is judged.

Expectations of good behaviour therefore include:

- Speaking kind words to others. Teasing and name calling is not to be tolerated.
- Being honest.
- Helping to keep the School tidy.
- Respecting the need for a quiet learning environment.
- Behaving well on the way to and from school.
- Greeting teachers, other pupils and visitors with a smile and with courtesy.

## CLASS GROUPINGS

Emmaus School is committed to providing small teaching groups, as far as possible, within the constraints of staffing, accommodation and pupil numbers. Because teachers can give pupils more individual attention, pupils of all abilities make excellent progress.

Currently there are five classes which contain pupils of the following year groups:

- Class 1 Reception, Years 1, & 2
- Class 2 Years 3 & 4
- Class 3 Years 5 & 6
- Class 4 Years 7, 8, 9
- Class 5 Years 10 & 11

## RECEPTION TO YEAR 6

We believe in striking a balance between traditional curriculum values and ensuring that pupils have plenty of opportunity to learn through doing and experiencing. Undoubtedly, reading is the key to unlocking the rest of the curriculum and primary school teachers invest a lot of time to ensure pupils have the best possible start in learning to read. Primary pupils also build solid foundations in mathematics, spelling and handwriting, by following carefully planned schemes of work and using a wide range of the best curriculum materials available.

Through studying science, history, geography and Scripture, pupils gain an understanding of God's wonderful world, but there is still plenty of opportunity to develop creativity in music and art, and physical skills in PE and sport, as well getting an early start in modern foreign languages in French lessons. Play is important, too, and pupils make good use of the outdoor area for structured play and free recreation, as well as learning the basic skills through practical maths and language activities.





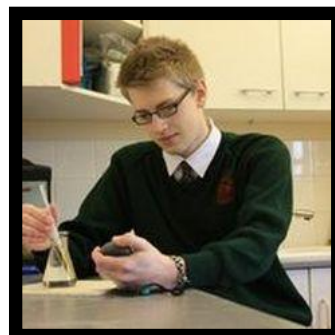
We continue to build on the excellent work of the Primary Department and widen the curriculum to include subjects such as ICT, Food Technology and modern foreign languages, whilst still maintaining the balance of academic study and rich cultural experiences. Pupils are increasingly encouraged to take more responsibility for their own studies and become more independent learners. This stands them in good stead should they decide to continue their studies at one of the local 6th Forms.

At GCSE Level, pupils normally take a core of 5 subjects: mathematics, English language, English literature, French and one of the sciences. Most students opt for a further three or four subjects choosing from the following:

- Chemistry
- Biology
- Physics
- Spanish
- History
- RE
- Geography
- ICT
- Music
- Art
- Food technology
- Physical Education

Many of the GCSE courses lead to International GCSE qualifications, which have long been considered to be academically rigorous, thorough and excellent preparation for A Level, or the increasingly popular International Baccalaureate. Year after year, pupils gain excellent academic results which can be viewed on the School's website. Year 10 and 11 pupils are also offered careers guidance and take part in work experience.

Pupils' progress is monitored by standardised annual tests in reading and spelling which allow teachers to compare pupils with the national average in each year group. The Cognitive Abilities Test (GL Assessment) is used annually from Year 4 to test the children's potential in the three areas of verbal, quantitative and non-verbal reasoning and, in the secondary department, these tests give accurate predictions of the GCSE grades that individual pupils can be expected to achieve. Since it is not possible to 'teach to the test', lessons are devoted to teaching rather than preparing pupils to perform well in tests.



## PERSONAL, SOCIAL AND ECONOMIC EDUCATION (PSHEE)

Topics in this area of the curriculum fall naturally into many parts of the curriculum, but in addition to this, the School devotes a week off timetable every year to teach the pupils about government, British Institutions, personal finance, family and relationships, personal health, emotional well-being, making godly choices, and careers. It is called CARE week, which is an acronym for Compassion (for others), Accountability (to God and authority), Respect (for ourselves and others) and Evaluation (making balanced and informed choices).

Overarching all that the children learn in this week is the great commandment to 'Love the Lord your God with all your heart and with all your soul and with all your strength and with all your mind.' and to 'Love your neighbour as yourself.'

The week consists of teaching sessions in the morning and in the afternoons the children have the opportunity to get involved in practical sessions which give them the opportunity to engage with the local and wider community and benefit from visiting speakers. The themes covered in CARE week are re-enforced in lessons and assemblies throughout the school year.



## EXTRA CURRICULAR ACTIVITIES

Pupils are encouraged take advantage of the wide range of extra-curricular activities on offer. School events throughout the year offer the pupils' opportunities to perform in singing, drama and music ensembles, and private music lessons are available during the school day. There are after school clubs including Football Club, Netball Club and Debating Society, plus students can also take part in the Adventure Service Challenge and the Duke of Edinburgh Award.

The pupils organise a School Council themselves and thereby gain useful life and leadership skills, as well as serving the school and wider community through fundraising and other charitable ventures. Throughout the year, educational visits are arranged to support the curriculum and broaden the children's cultural experiences. Visits to museums, galleries, science lectures and the theatre are arranged, as well as field trips, residential trips and exchange visits to France.

## ADMISSIONS

Emmaus School accepts students, both boys and girls, from four years of age\* to 16 years of age. Pupils will be admitted regardless of ability, disability, race, religion or Christian denomination, but all parents and pupils must accept and adhere to the Christian ethos and teaching of the School. It is expected that the majority of pupils will be from Christian families (minimum 80%). Pupils from non-Christian backgrounds will be admitted up to a ceiling of 20% of those on the school roll.

*\*four year olds will be admitted into Reception in either September or January, whichever is nearest to their 5<sup>th</sup> birthday.*

## APPLICATION PROCEDURE

Parents should ensure that they have fully read the School Prospectus and agree with the aims of the School, the Belief Statement and the School Rules. Parents will then need to complete an Emmaus School Application Form for **each child** and return to the school office with a non-refundable fee of £75 for the first application, and £25 for each subsequent child.

### Transfers

If a child is already of school age and has been either attending another school or home-schooled, parents will be asked to provide recent examples of the child's work and/or an up-to-date report. References may also be sought from the Headteacher of the current school (or in the case of a home-schooled child, from a reliable personal referee) as well as from a church leader or other professional referee as given on the application form.

Applicants will then be asked to attend the School for a 'taster' day which will include diagnostic tests. This also provides both parents and the child with an opportunity to see first-hand what Emmaus School is like and whether it will be suitable for them. The Headteacher is then responsible for deciding whether or not to offer your child a place at Emmaus School. Upon confirmation of an offer, the first term's fees (or part thereof) will need to be paid by the first day of school.

### Applications for Entrance into Reception

Upon receipt of the Application Form, references may be sought from your child's pre-school setting and from the church leader or other professional referee as given on the application form. The Headteacher will decide whether the School is able to offer your child a place in Reception. Upon confirmation of an offer of a place, your child will be invited to attend a 'new entrants' day which usually takes place in the latter half of the Summer term (or the Autumn term for those starting in the January). Please note that a deposit of £200 towards the first term's fees will need to be paid by the start of the summer term and that the remaining amount will need to be paid by 1<sup>st</sup> August.

***Each pupil's application is considered on its own merit. Where the Headteacher is unable to reach a decision, the matter will be referred to the Governors who will make a final decision.***

## INSPECTION REPORT

Emmaus School became a member of the Independent Schools Association in 2015. A full copy of the School's most recent ISI Inspection Report (March 2016) is available on the School's web site. Inspectors said:

- Pupils' behaviour is impeccable.
- The ability profile of the school is above the national average.
- The Spiritual, moral, social and cultural development of the pupils is excellent.

## CONTACT INFORMATION

Please do not hesitate to contact the School if you have any questions or if you would like to arrange a visit:

Emmaus School  
School Lane  
Staverton  
Trowbridge  
BA14 6NZ  
Tel: 01225 782684  
Email: [info@emmaus-school.org.uk](mailto:info@emmaus-school.org.uk)  
Website: [emmaus-school.org.uk](http://emmaus-school.org.uk)  
Registered Charity Number: 1073476  
DfE Number: 865/6032



***Ad cognoscendum illum* - to know God more clearly, love Him more dearly and follow Him more nearly.**